

Youth Hostel

**Dr. Hanan Sabry
Dr. Mostafa Ref'at
Dr. Akram**

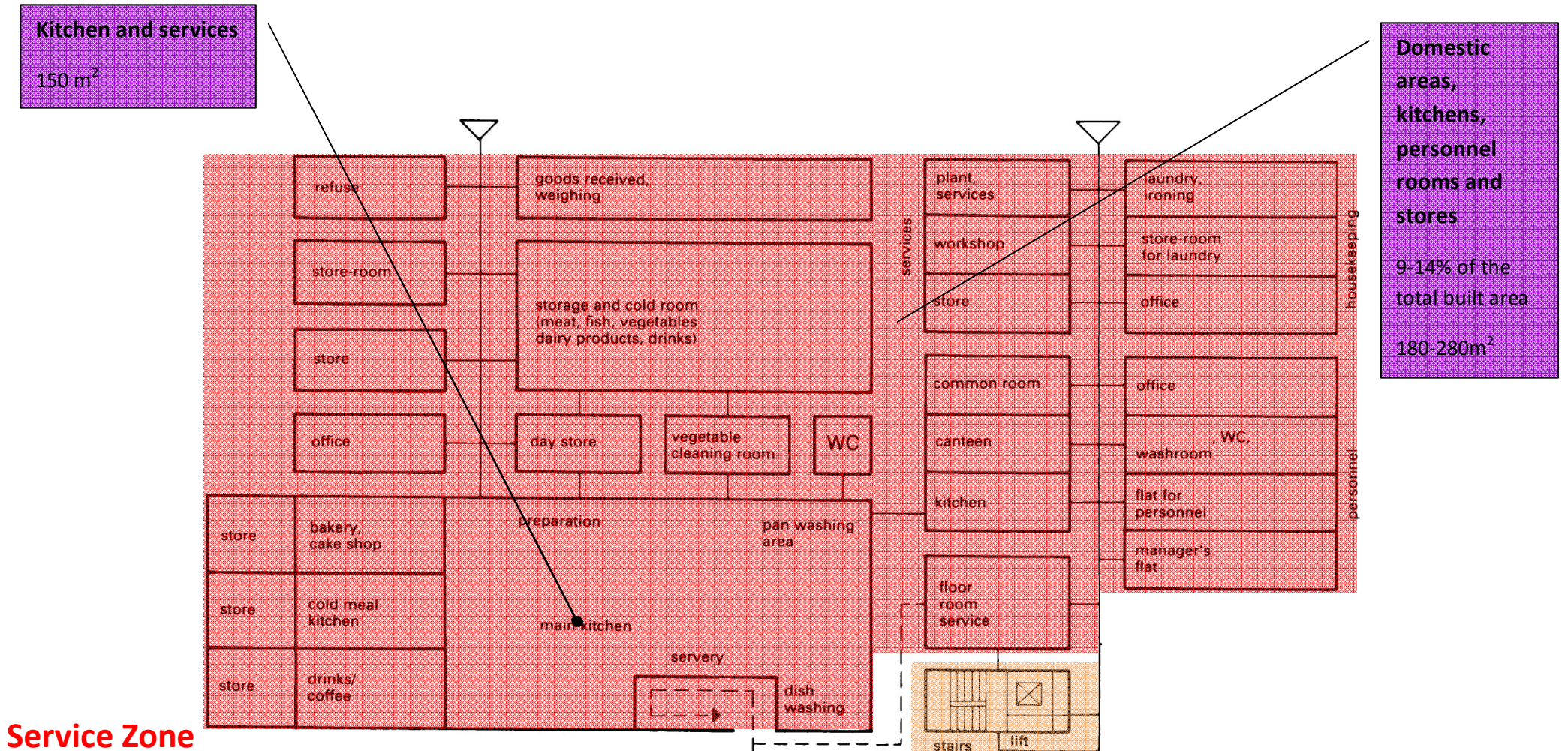
**Dr. Sherif Nassar
Dr. Ahmad El Khateb
Dr. Ahmad Metoo**

**Ahmad Mohamed Ahmad Tork
Ahmad Sa'eed
Hebatalla Ali Ghalib
Hesham Abd el Mon'em**

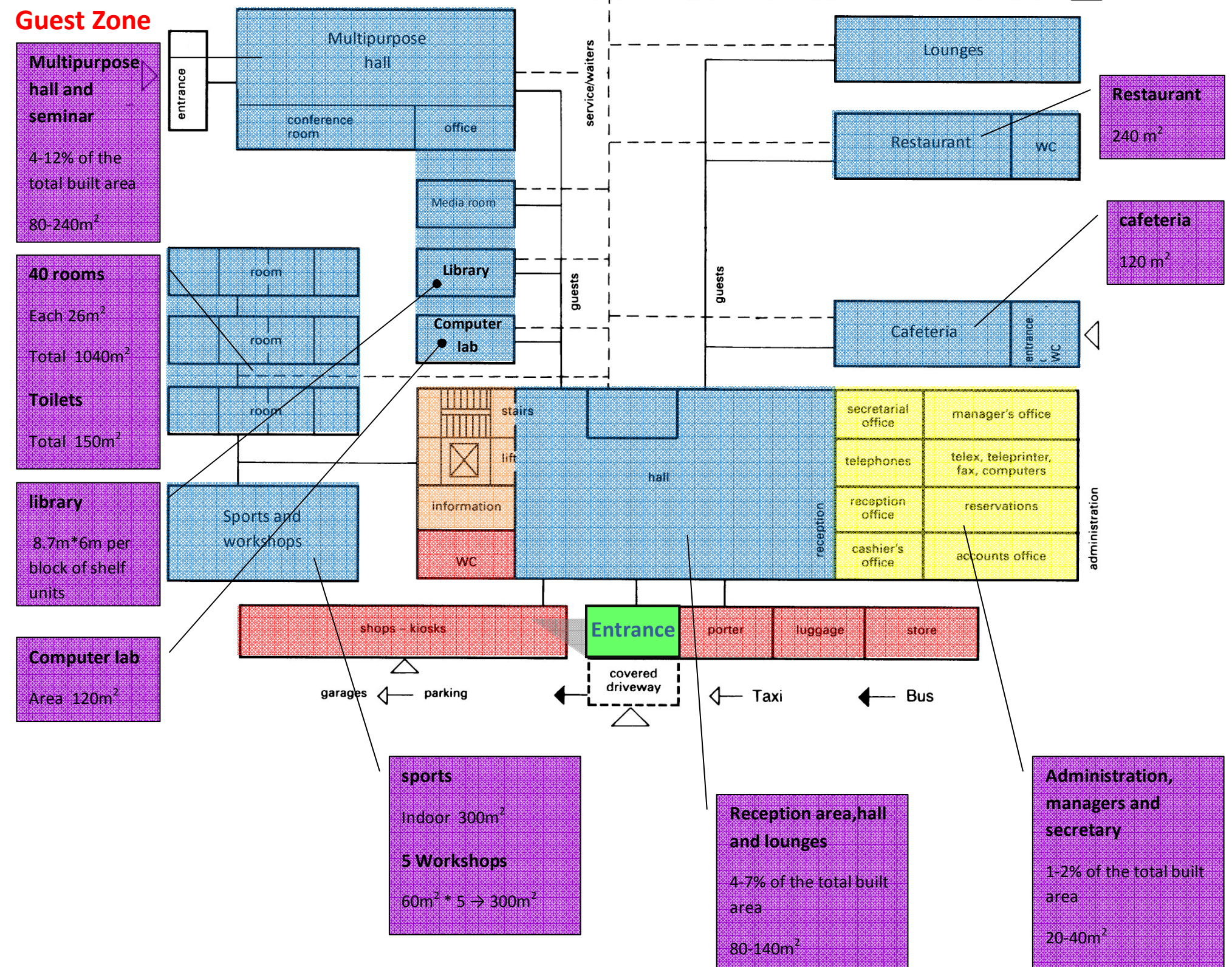
**Loleen Gamal El Deen
Niveen Nagdi
Nourhan Abbas
Yasmin Esmat Ahmad**

Index

Flow chart	1
Hostel elements	2
Rooms	2
Kitchen	4
Seminar	5
Library	6
Workshop	6
Parking	7
Fire Protection	8
Structure system	9
Large span coverage	10
Examples	13

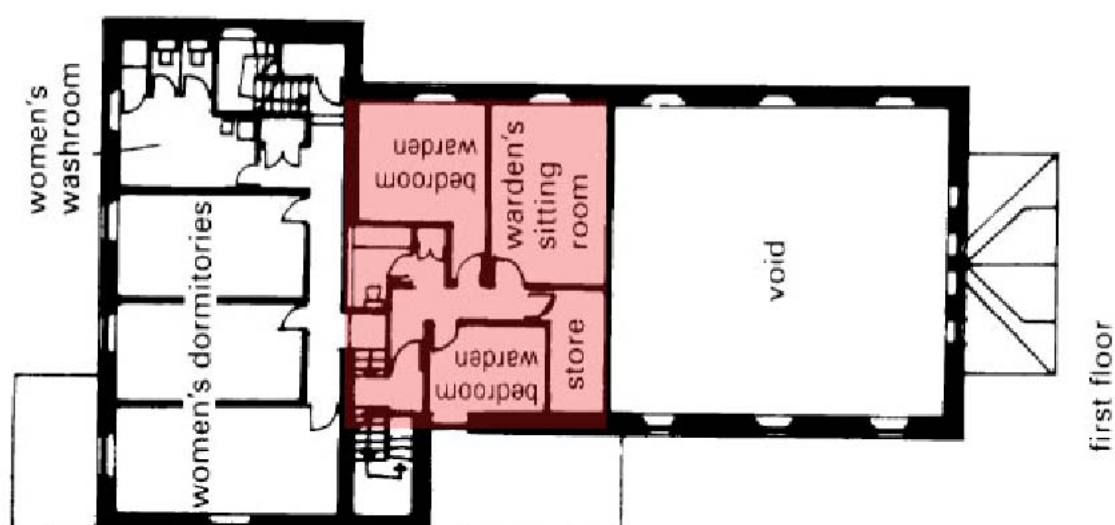
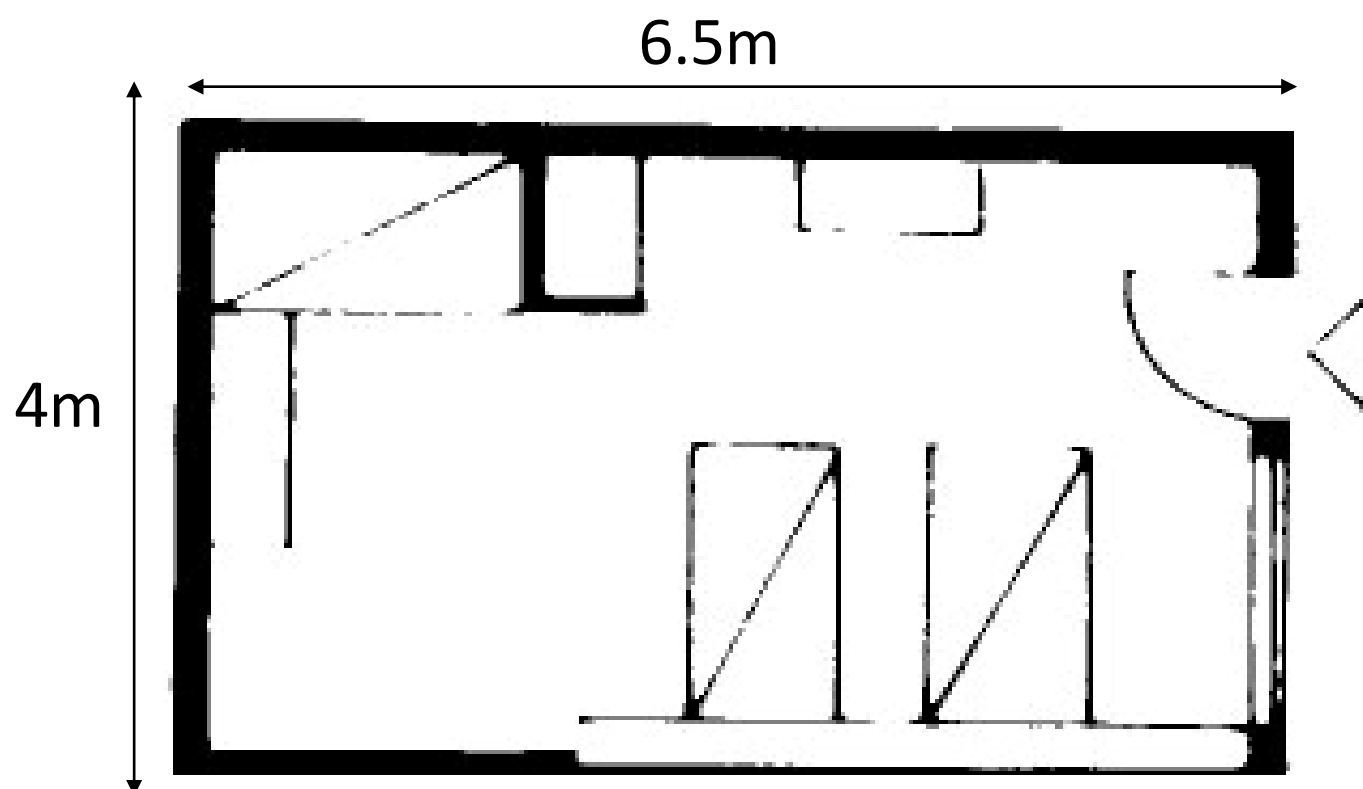
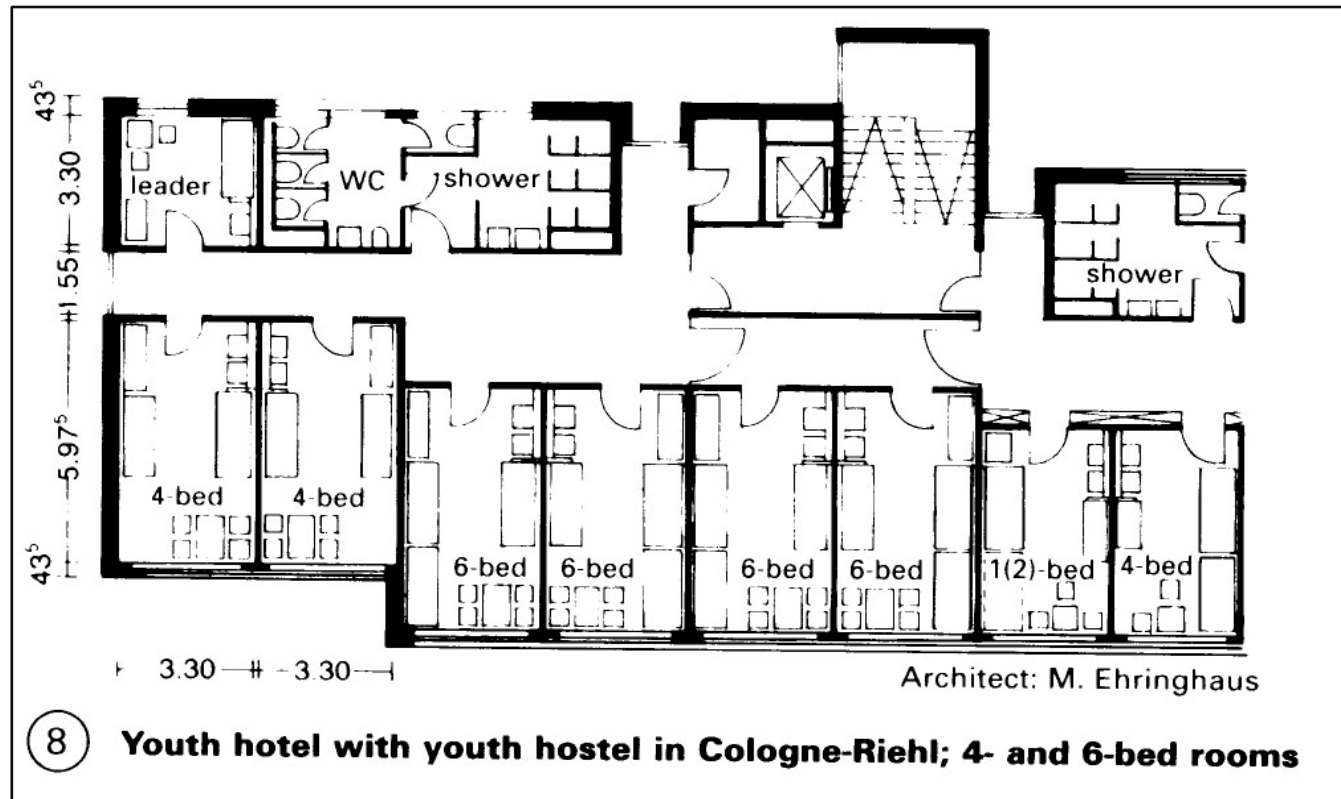


Service Zone

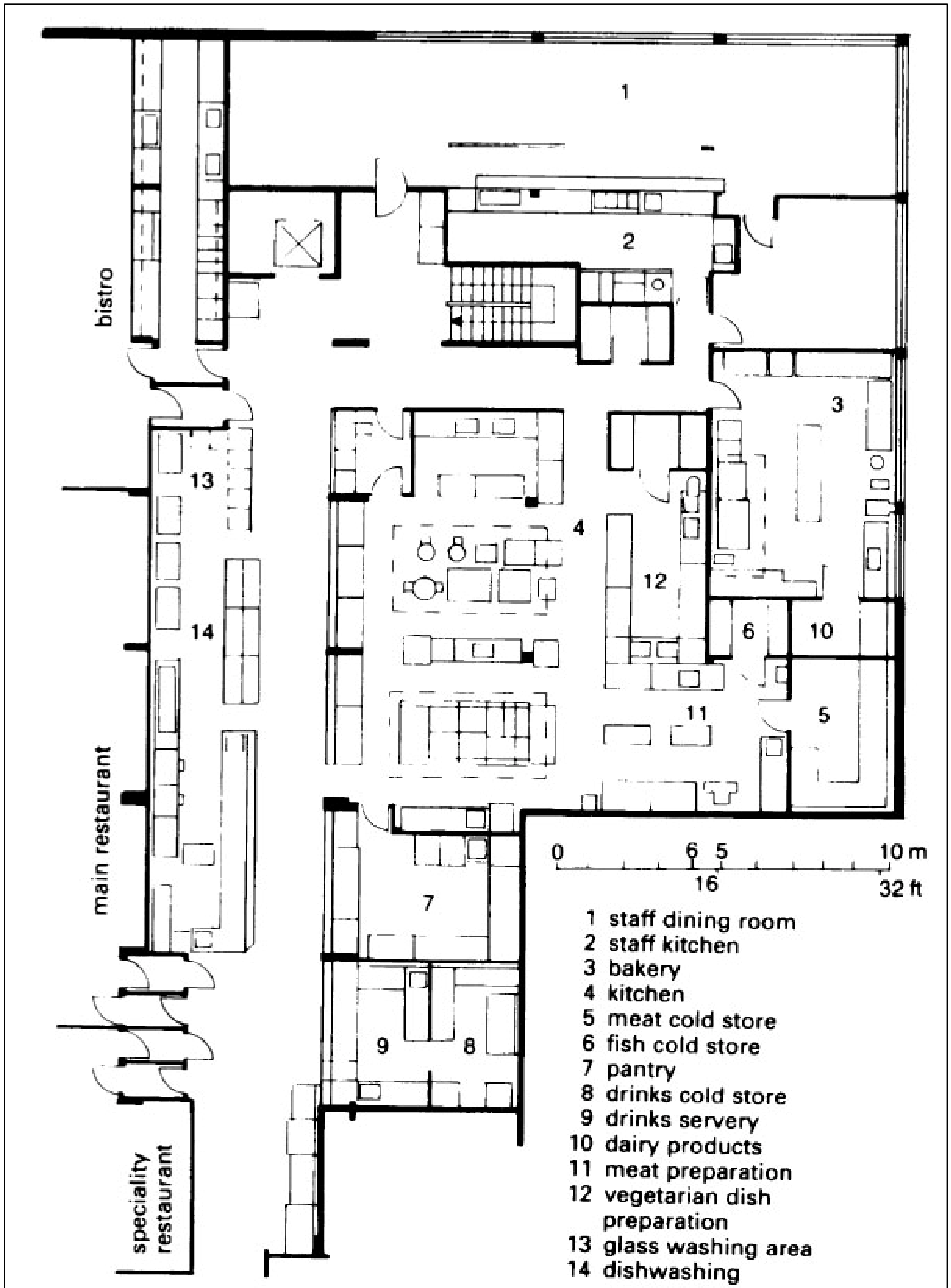


Hostel elements

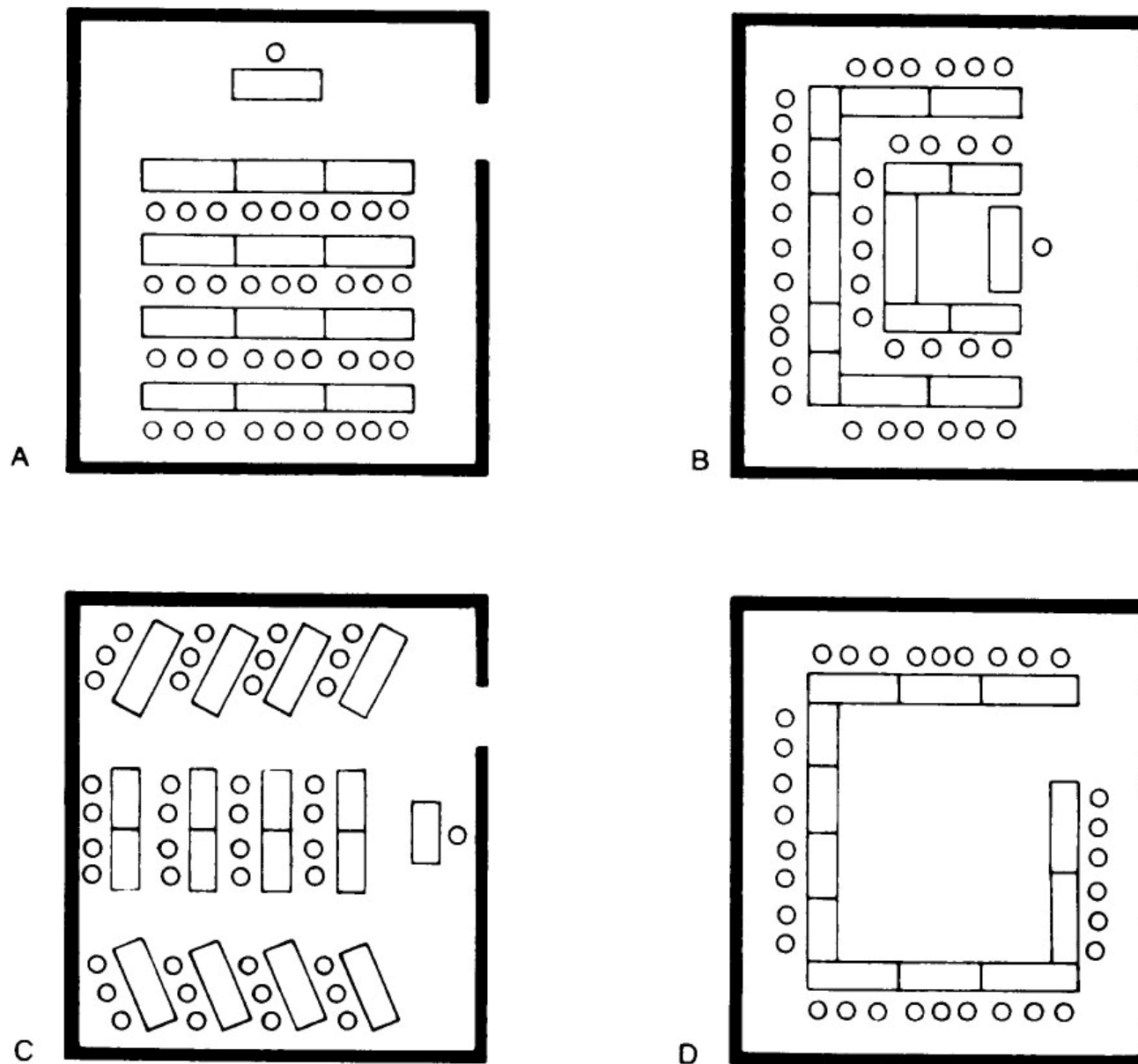
Hostel Rooms



Hostel Kitchen

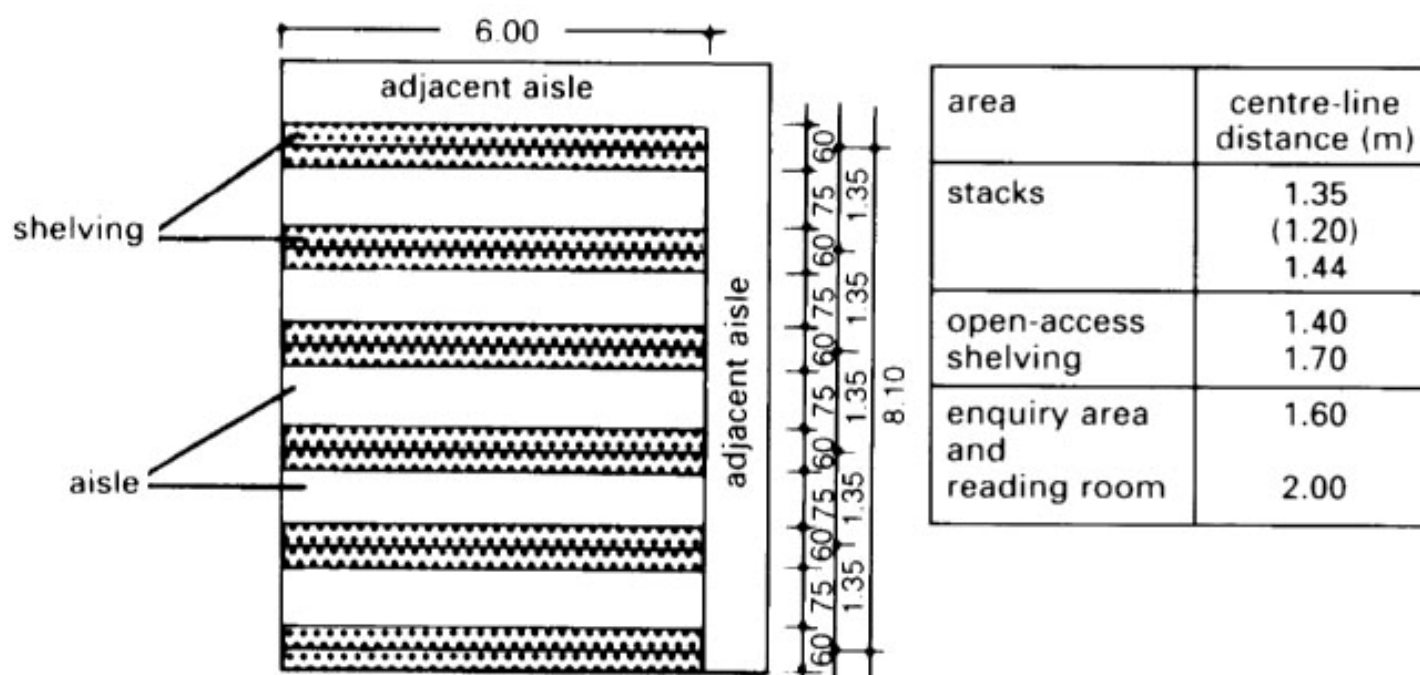


Hostel seminar room



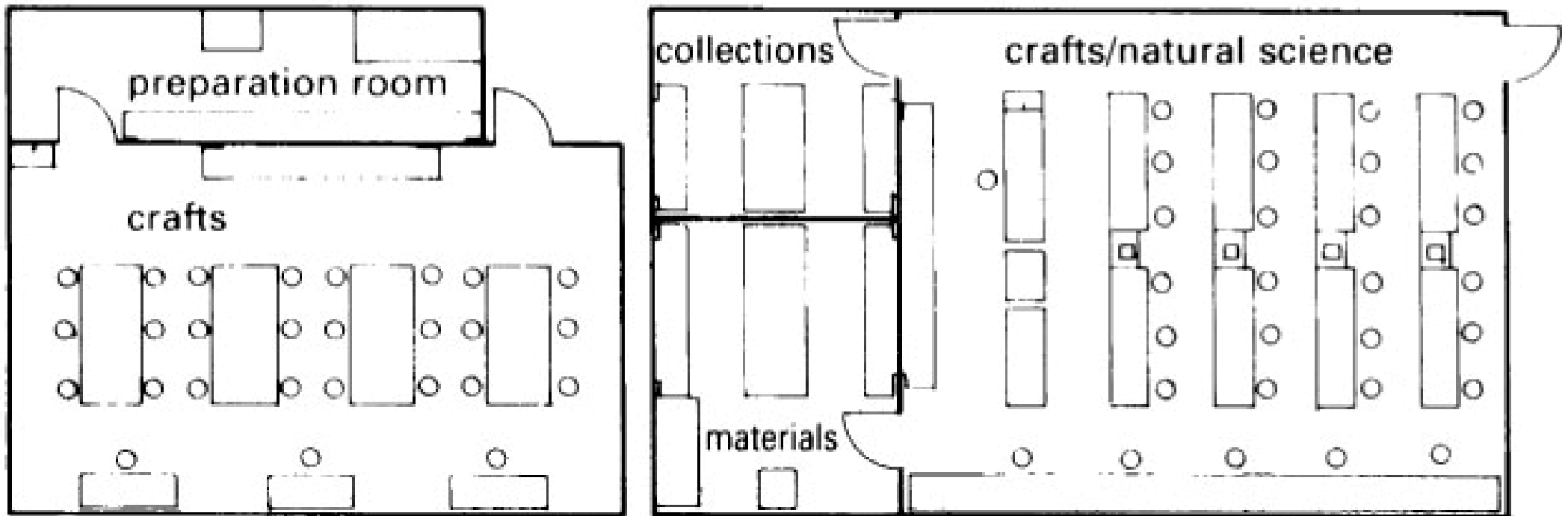
① Seminar rooms, variable seating arrangements

Hostel library

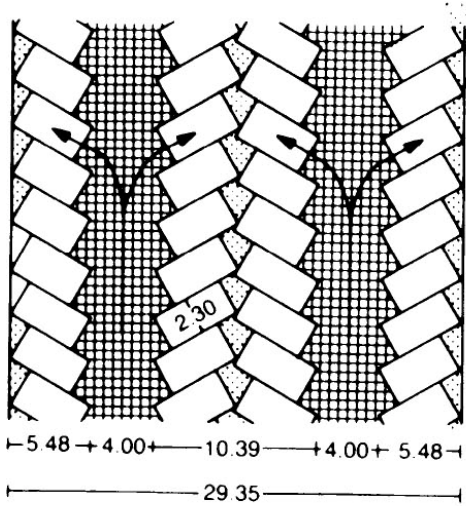


③ Floor area for open-access bookshelves 8.70 × 6.00m per block of shelf units

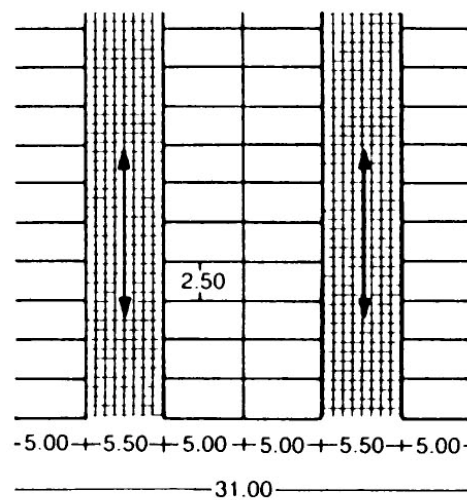
Hostel workshops



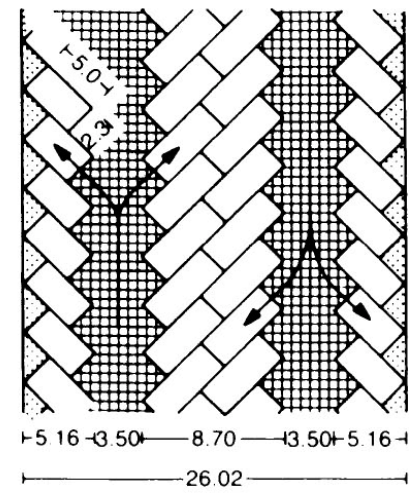
Hostel parking



9 60° angled parking, one-way traffic



10 90° parking, 5.5m wide road
Parking spaces 2.5m wide



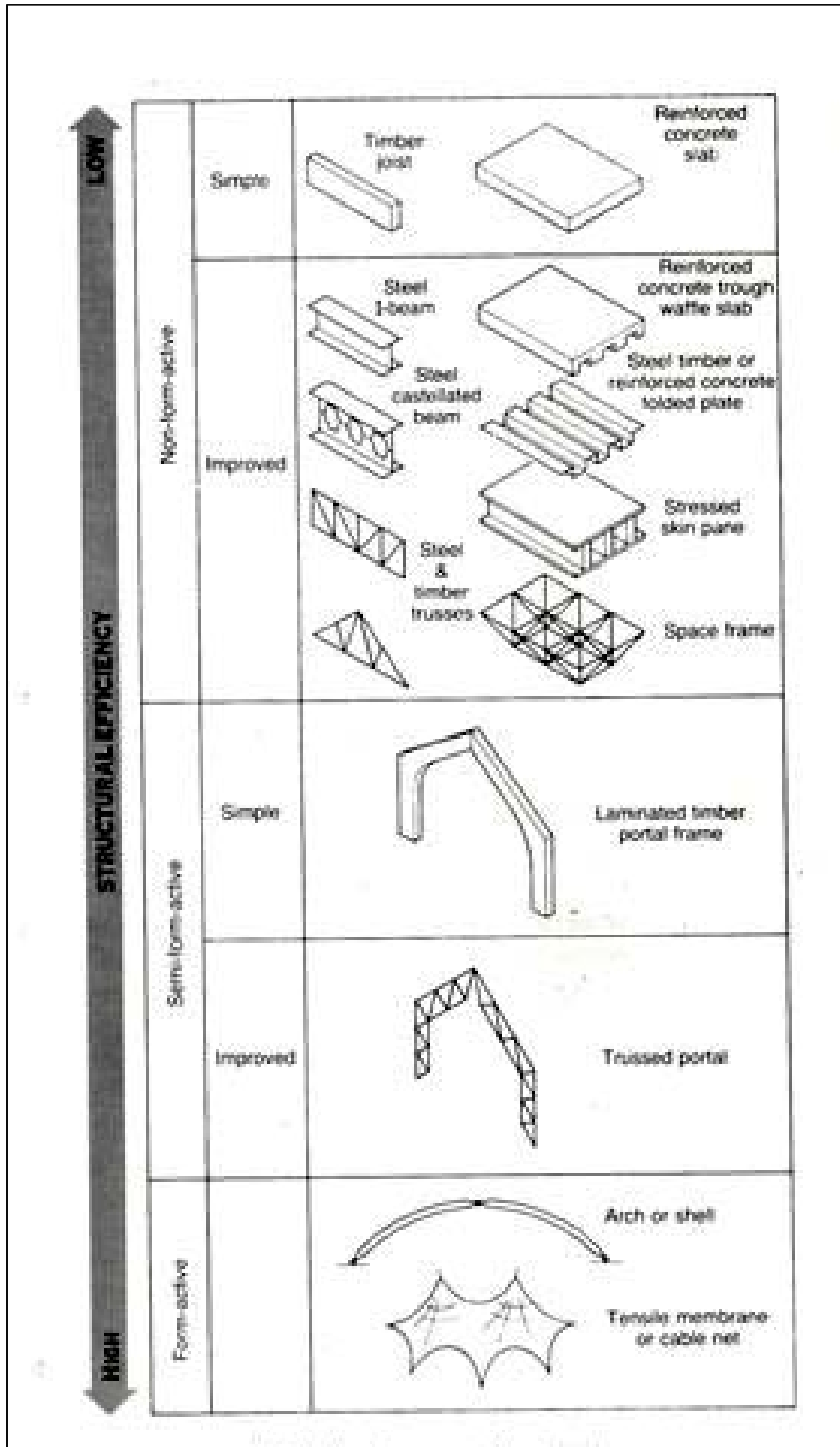
12 Oblique parking layout

Fire protection requirements

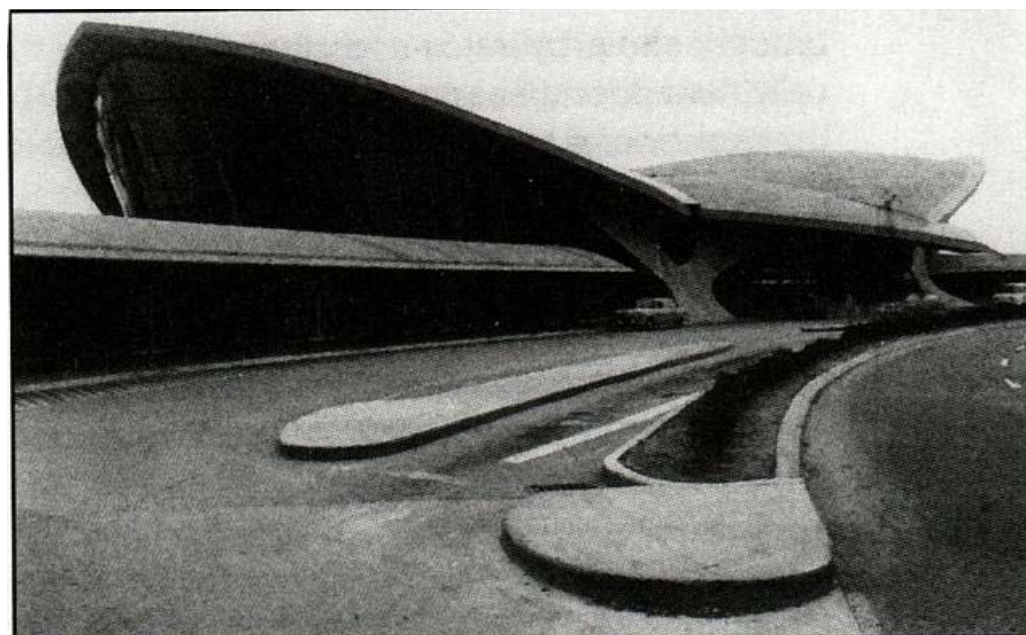
Building elements fire resistance according to the maximum limits of floor spaces :

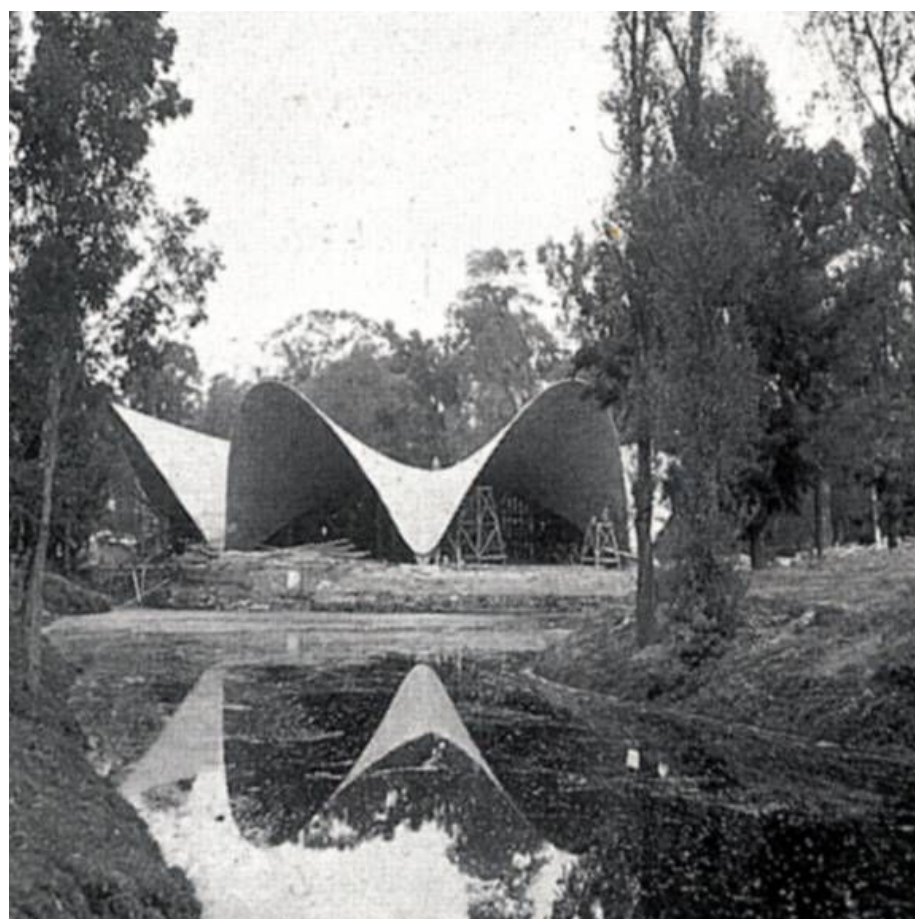
Building elements fire resistance (hour)	No. of floors without basement	Maximum limit of floor area (m ²)			Maximum limit of area undivided with vertical fire joints in the basement (m ²)	Vertical fire joints dividing the basement fire resistance (hour)
		If the building foresees one street	If the building foresees two streets	If the building foresees three streets		
$\frac{3}{4}$	1	1200	1500	1800	500	$\frac{3}{4}$
	2	900	1125	1350		
	3	600	750	900		
1	1	—	—	—	500	2
	2	6000	—	—		
	3	4000	5000	6000		
	4	3000	3750	4500		
	5	2400	3000	3600		
	6	2000	2500	3000		
2	—	—	—	—	500	3

Structure system



Large span coverage





Examples:

A new school in India

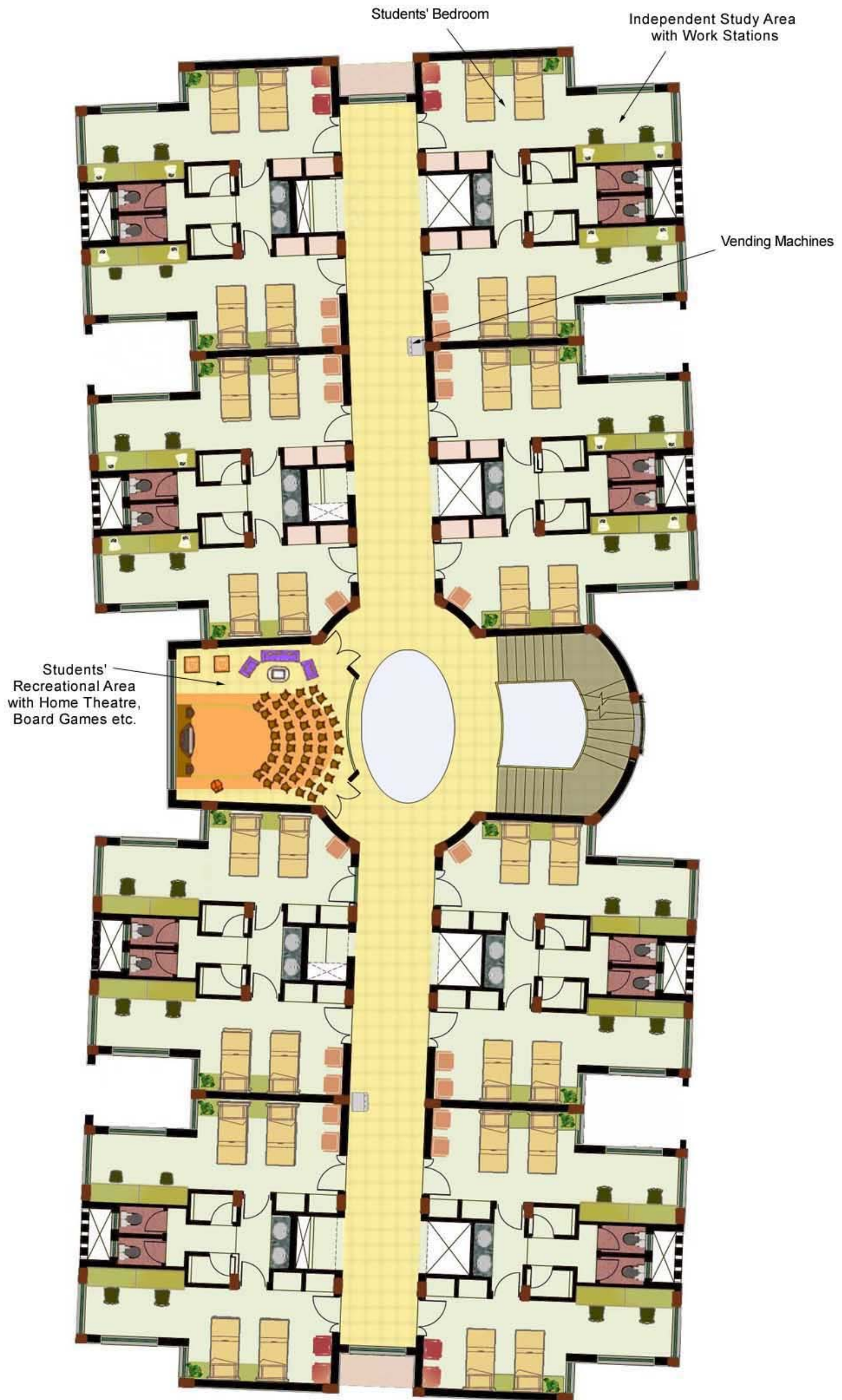
LEGEND

ENTRANCE	1.1	ENTRANCE GATES
	1.2	CAR PARK (45 NOS.)
	1.3	BUS PARK (4 NOS.)
SCHOOL QUADRANGLE	2.1	ADMINISTRATION BLOCK
	2.2	COVERED WALKWAY
SENIOR SCHOOL	3.1	MIDDLE SCHOOL
	3.2	SECONDARY SCHOOL
	3.3	HIGHER SECONDARY SCHOOL
	3.4	MEDIA CENTRE AND ARTS & CRAFTS
SPORTS FACILITIES	4.1	WATER BODY
	4.2	AMPHITHEATRE
	4.3	STUDENTS CENTRE
	4.4	SCHOOL STANDARD / FLAG
STUDENT PLAZA	5.1	STUDENTS CLUB
	5.2	SWIMMING POOL
	5.3	DIVING POOL
	5.4	FOOTBALL FIELD
	5.5	SPECTATOR STANDS
	5.6	BASKETBALL COURT
	5.7	TENNIS COURTS
	5.8	BADMINTON COURTS
	5.9	JOGGING TRACK
	5.10	PUTTING GREEN
DINING	6.1	DINING HALL
	6.2	DINING TERRACE
HOSTEL	7.1	BOY'S HOSTEL
	7.2	GIRL'S HOSTEL
	7.3	COVERED WALKWAY
PRIMARY SCHOOL	8.1	PRIMARY SCHOOL
FACULTY	9.1	HEADMASTERS BUNGALOW
	9.2	PRINCIPAL'S BUNGALOW
	9.3	FACULTY HOUSING
	9.4	STAFF HOUSING
	9.5	UTILITIES
	9.6	FACULTY CLUB
	9.7	SWIMMING POOL
	9.8	ACCESS ROAD



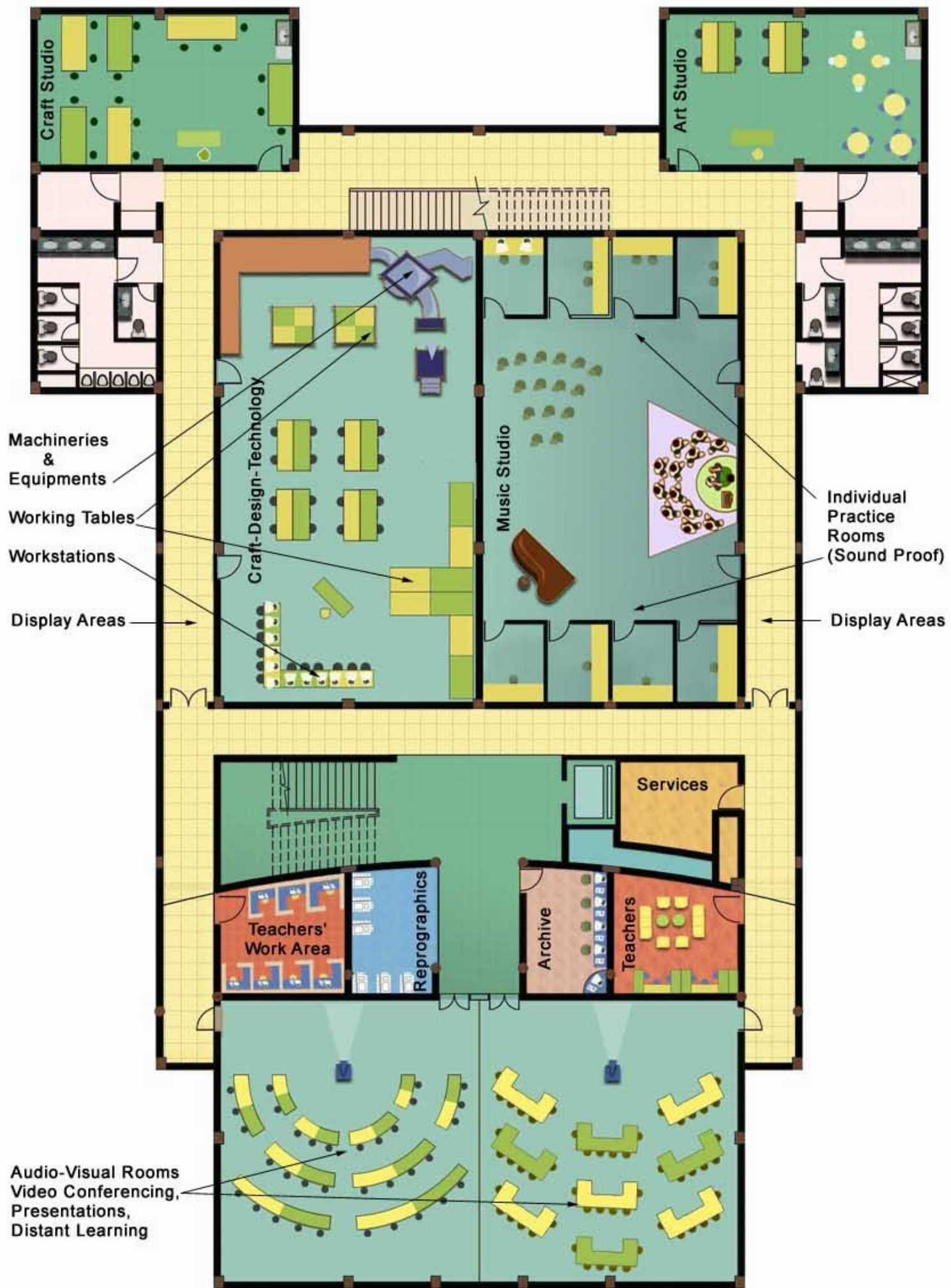
Site Plan

A new school in North India



Hostel Plan

A new school in North India

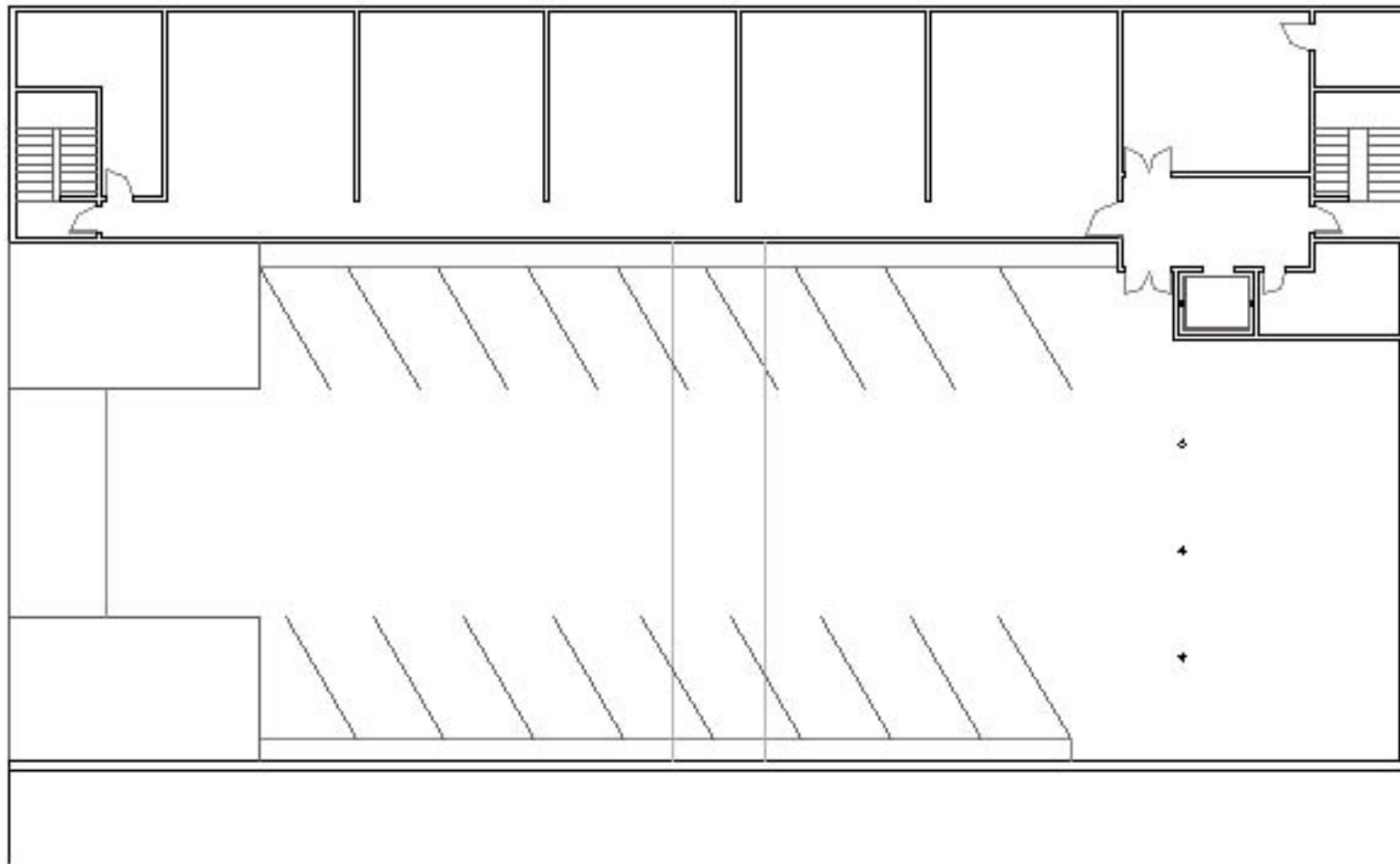


Media Center - First Floor Plan

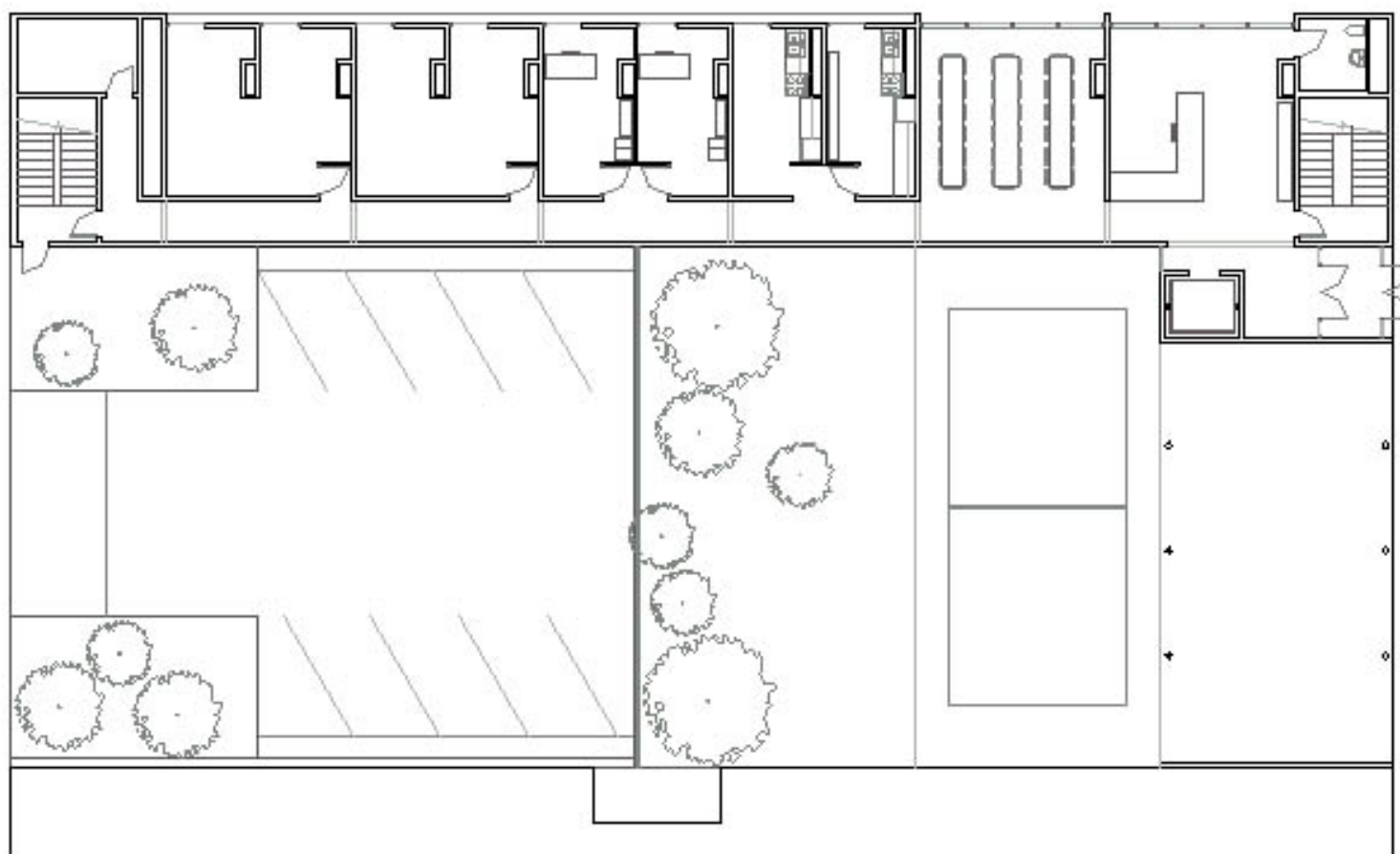
A new school in North India



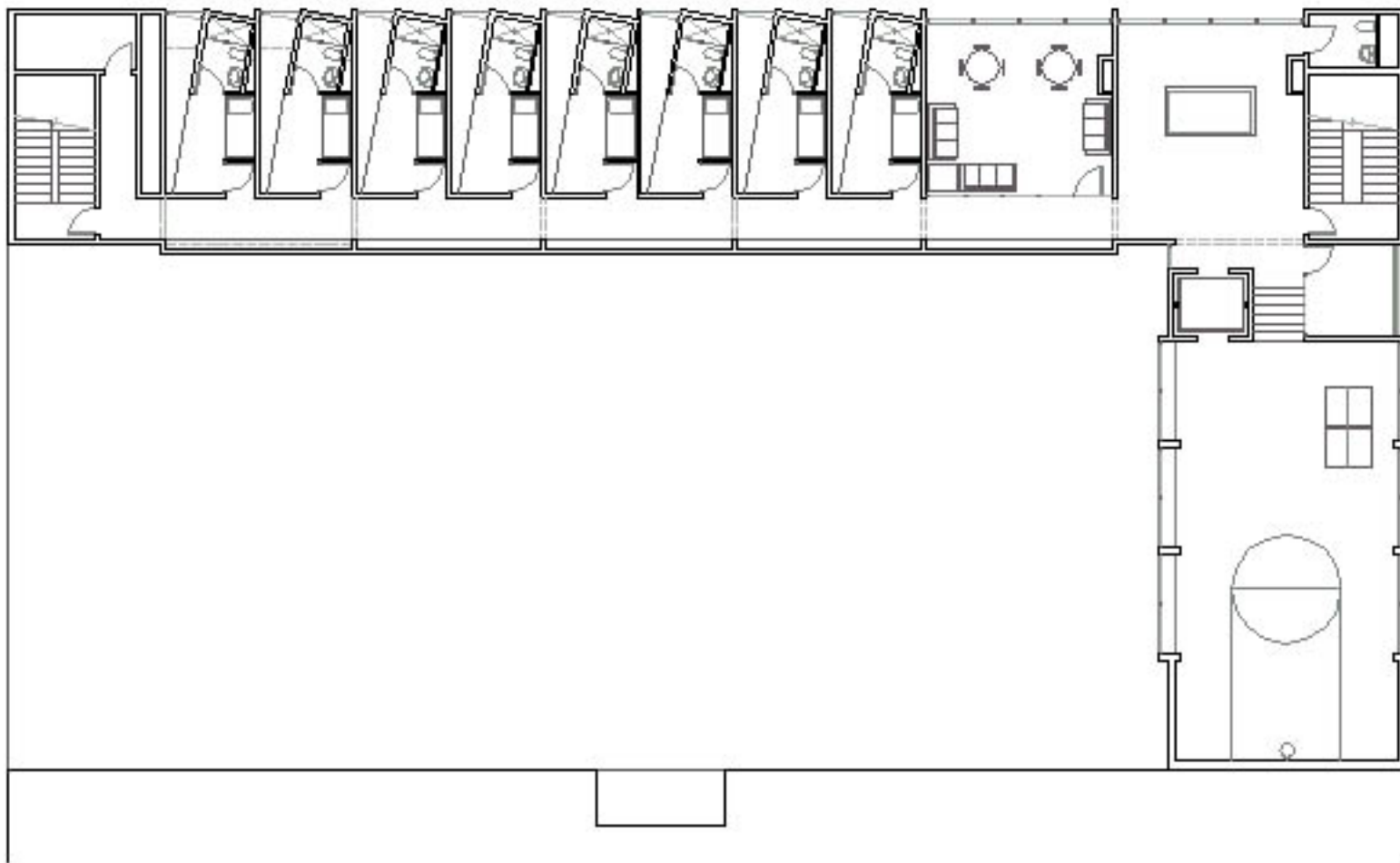
Chicago youth hostel



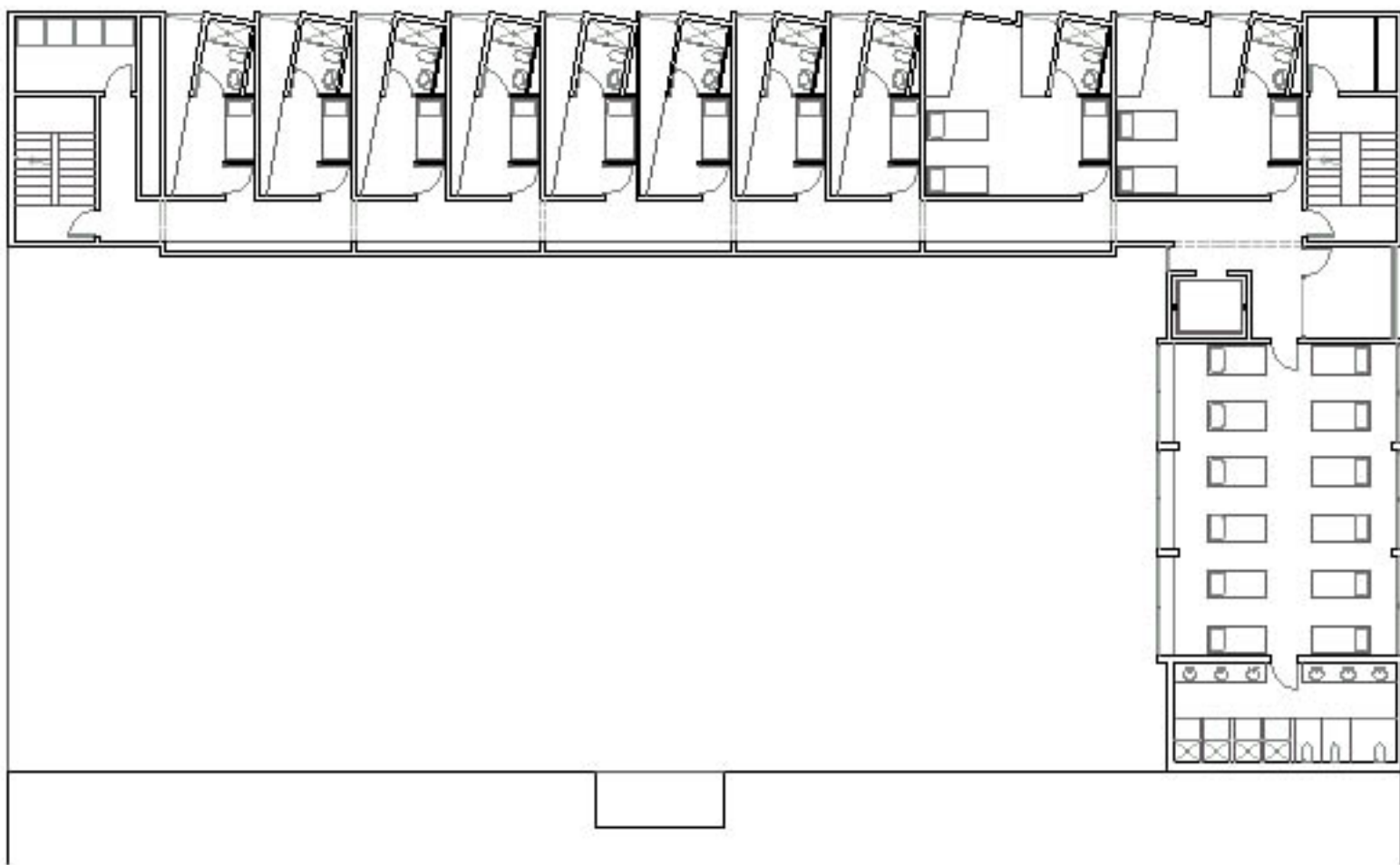
Ground floor plan



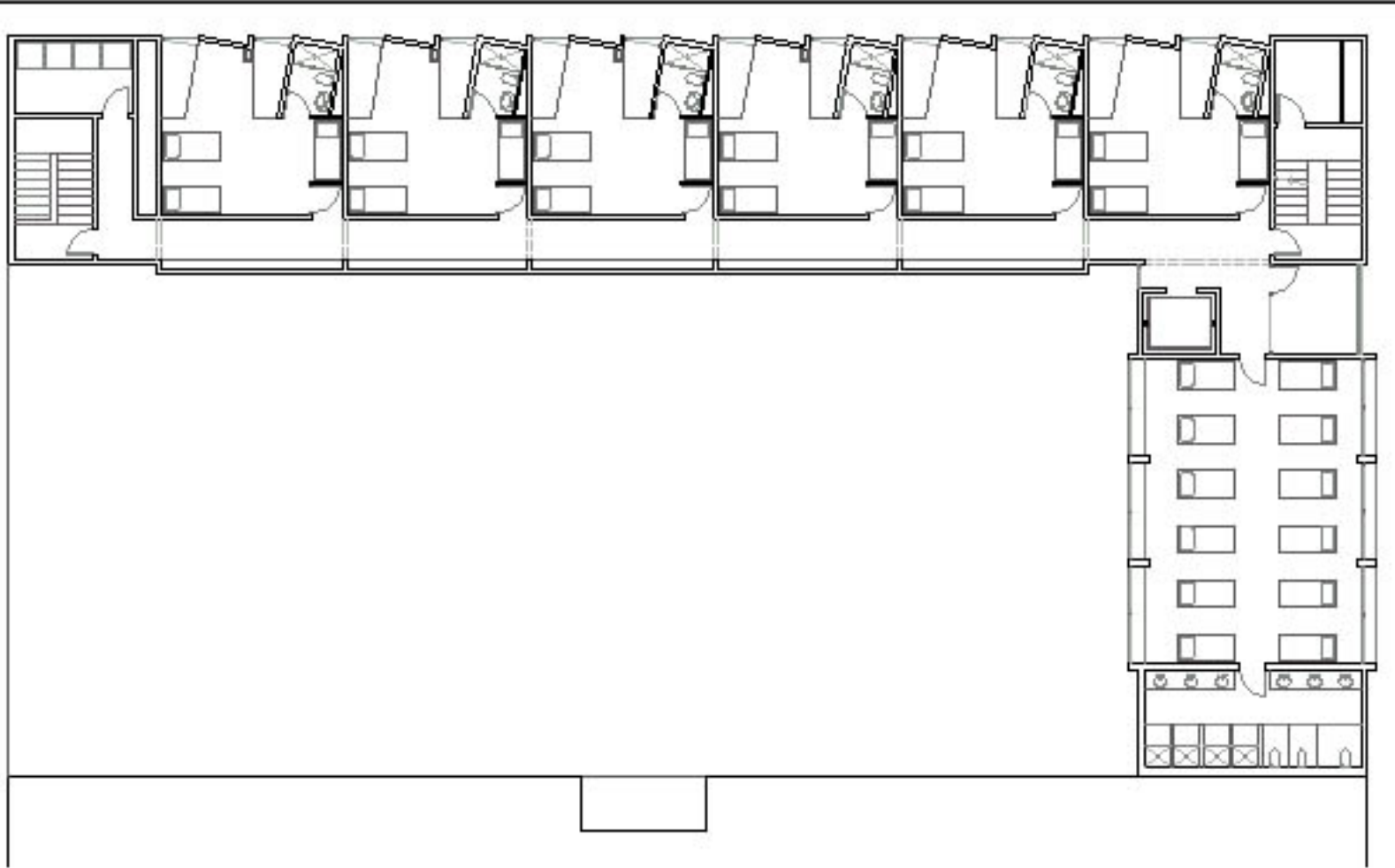
First floor plan



Second floor plan



Third floor plan



Fourth floor plan